

# **Install Notes**

**HCS 2.2.58**

**RTA 1.18.64**

**SAV 1.8.46**

**Recipe Fragments (RF) 1.5.21**

**BaseSpace Broker 2.4.1.4**

***For HiSeq® 2500, 2000, 1500, or 1000  
Instruments***

## Introduction

This document describes the installation process for HCS 2.2.58, RTA 1.18.64, SAV 1.8.46, Recipe Fragments 1.5.21, .NET 4.5.1 and BaseSpace Broker 2.4.1.4 for the HiSeq 2500, 2000, 1500, and 1000 instruments.

**Important:** During the installation process some files will be automatically renamed. Custom settings will need to be manually changed after renaming.

## I. Pre-Installation

### Required PC Specs:

1. Computer provided by Illumina with HiSeq system.
2. Ensure that the FPGA version is displayed as below:
  - FPGA version 7.9.7 for HiSeq v4 Mode-enabled instruments
  - FPGA 3.10.3 or above for non-HiSeq v4 Mode-enabled instruments

To find these versions, select Menu >> About from HCS software User Interface. If your FPGA does not meet this requirement, please contact Illumina Technical Support for assistance in upgrading before proceeding.

### Downloading Installers

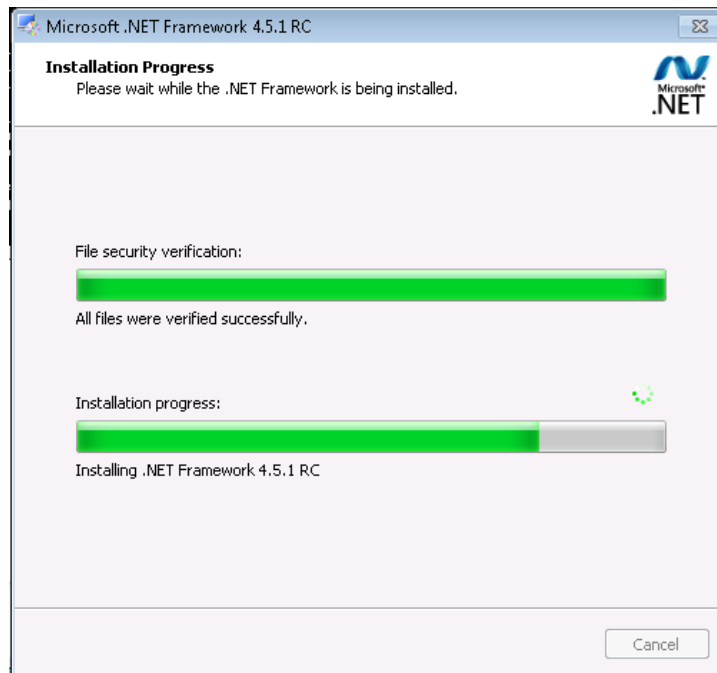
1. Obtain the batch installer software package release.
2. Copy the installation package folder to the computer's desktop.

## II. Installation

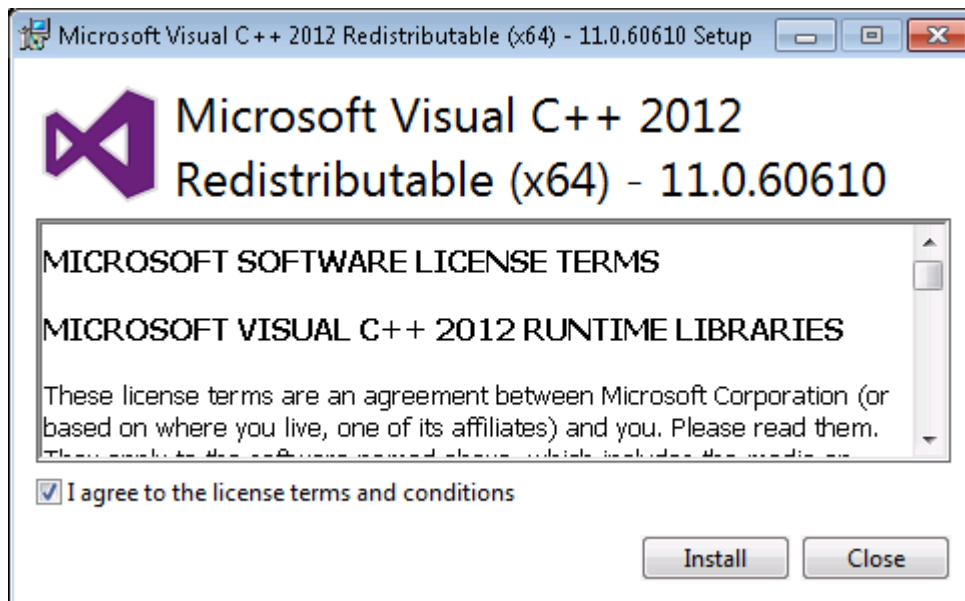
1. Ensure the instrument and PC are powered ON.
2. Stop the BaseSpace Broker service before proceeding with the update: To do this, go to Control Panel, Administrative Tools, Services. From the list of Services, select BaseSpace Broker (may be listed as Illumina BaseSpace Broker), and then select "Stop the service".
3. Double-click on the "InstallSoftware.bat" batch file in the HCS installer folder as shown below. This will initiate installation.

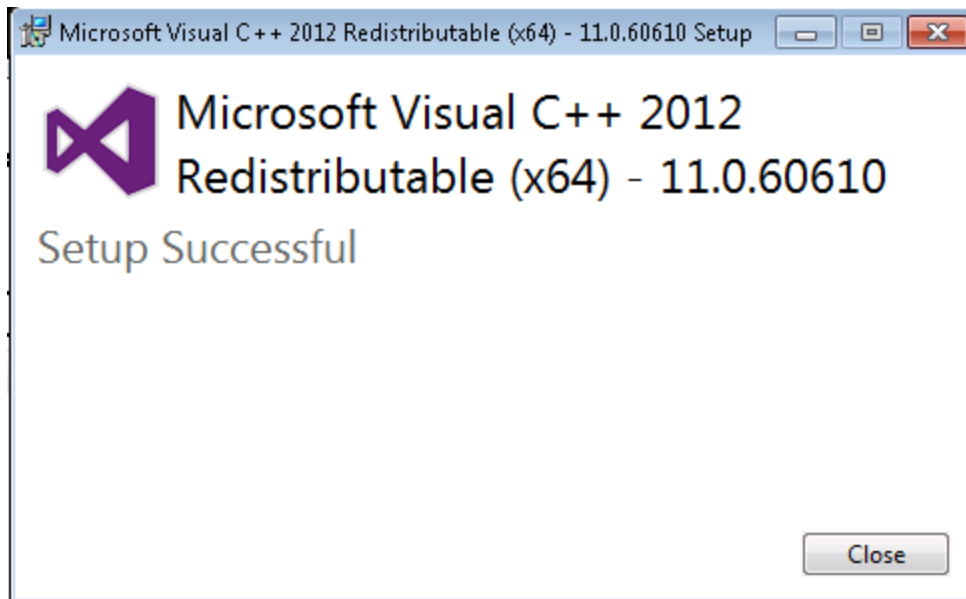


If .NET 4.5.1 is not installed, it will install automatically.



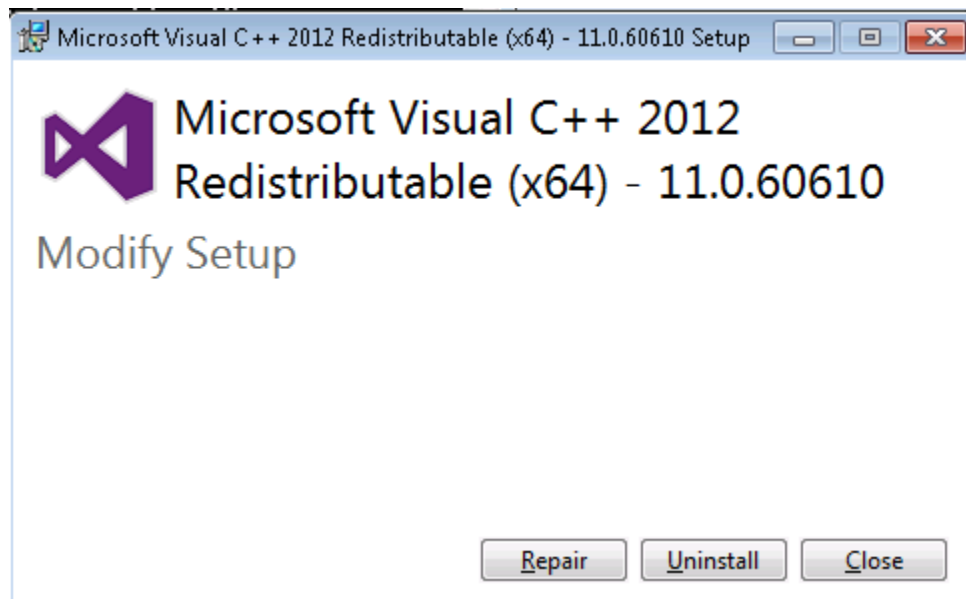
Check the box to indicate agreement to the license terms and conditions, then press "Install."

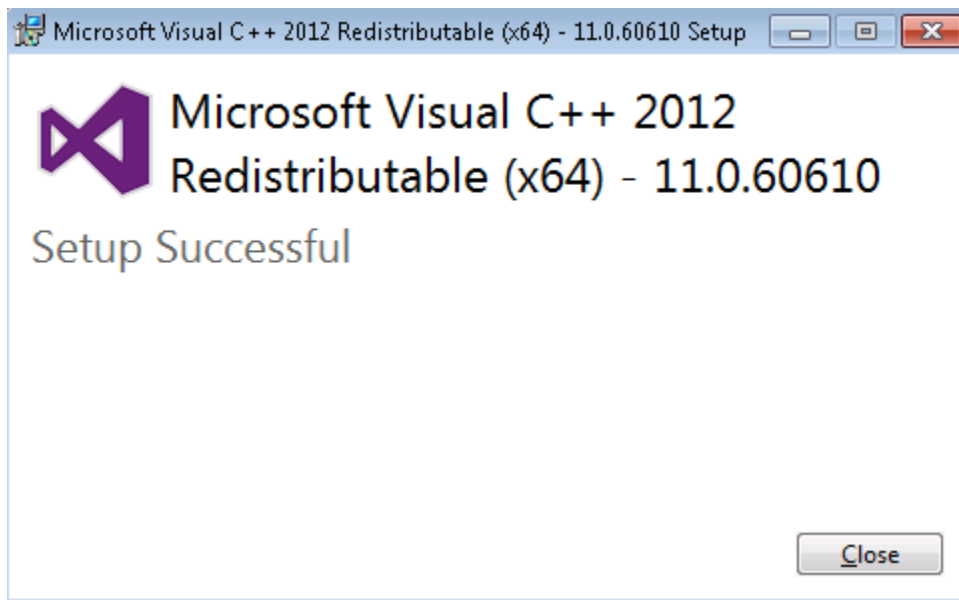




Press "Close" to continue with installation.

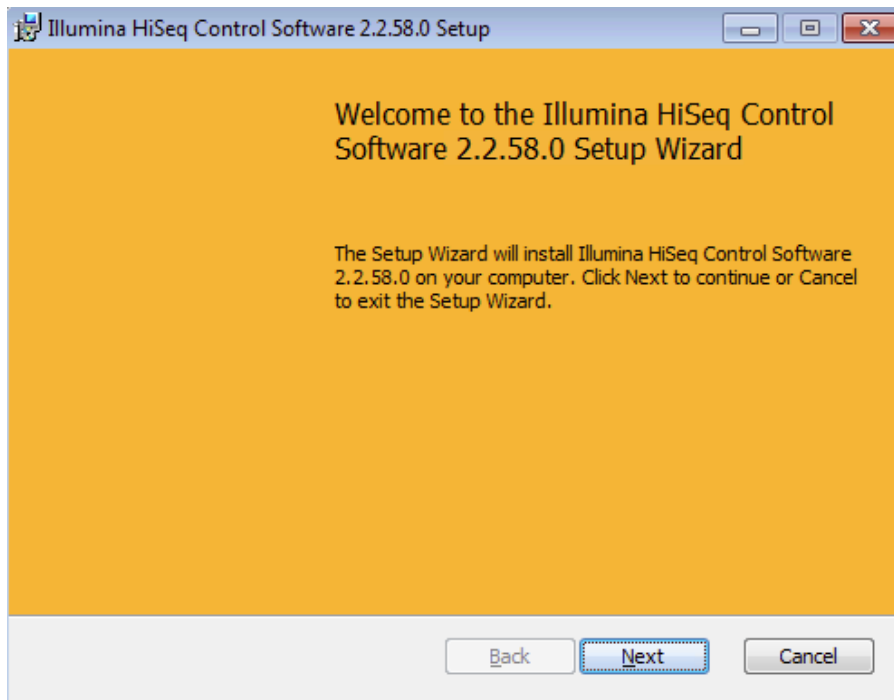
If .NET 4.5.1 is already installed, you will be prompted to Repair. Press Repair, then press Close to continue with install.

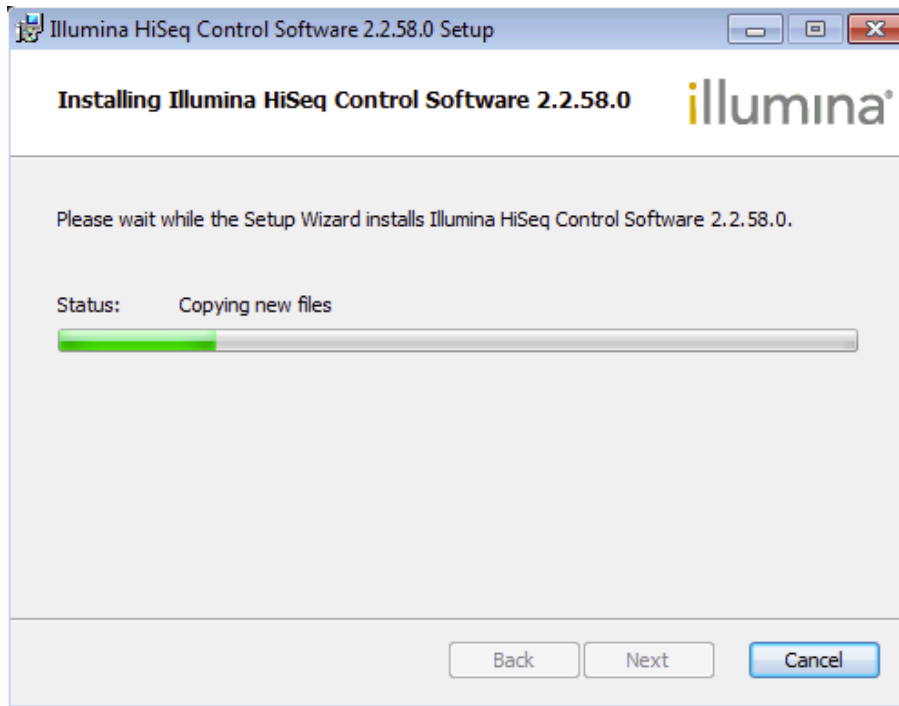




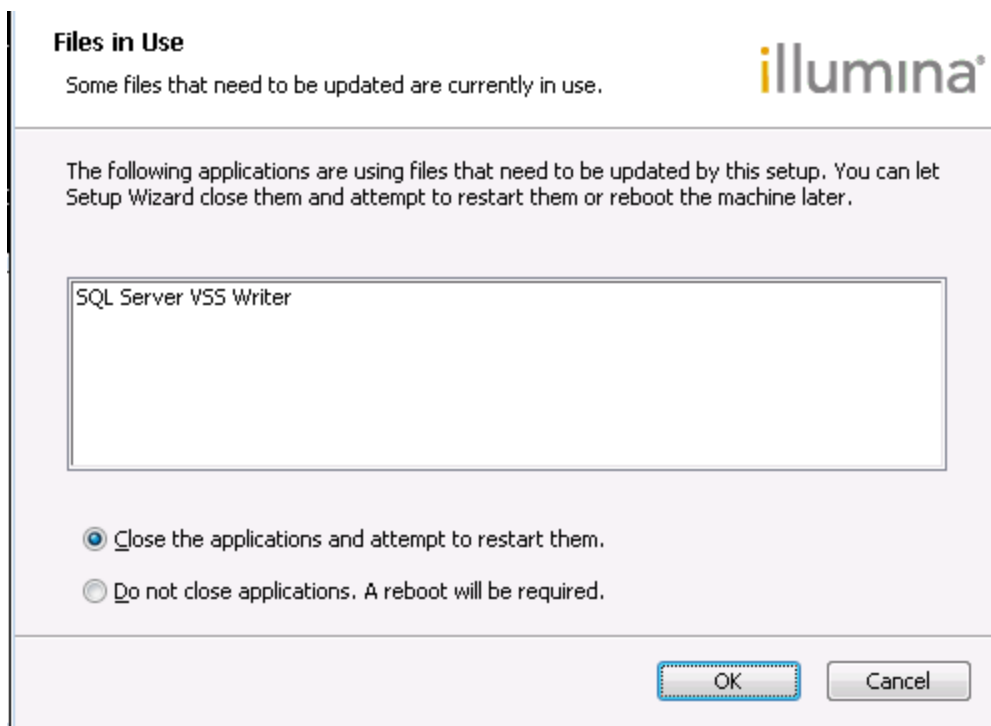
**When prompted, sequentially click "Next" and "Finish" to install each component of the software upgrade.**

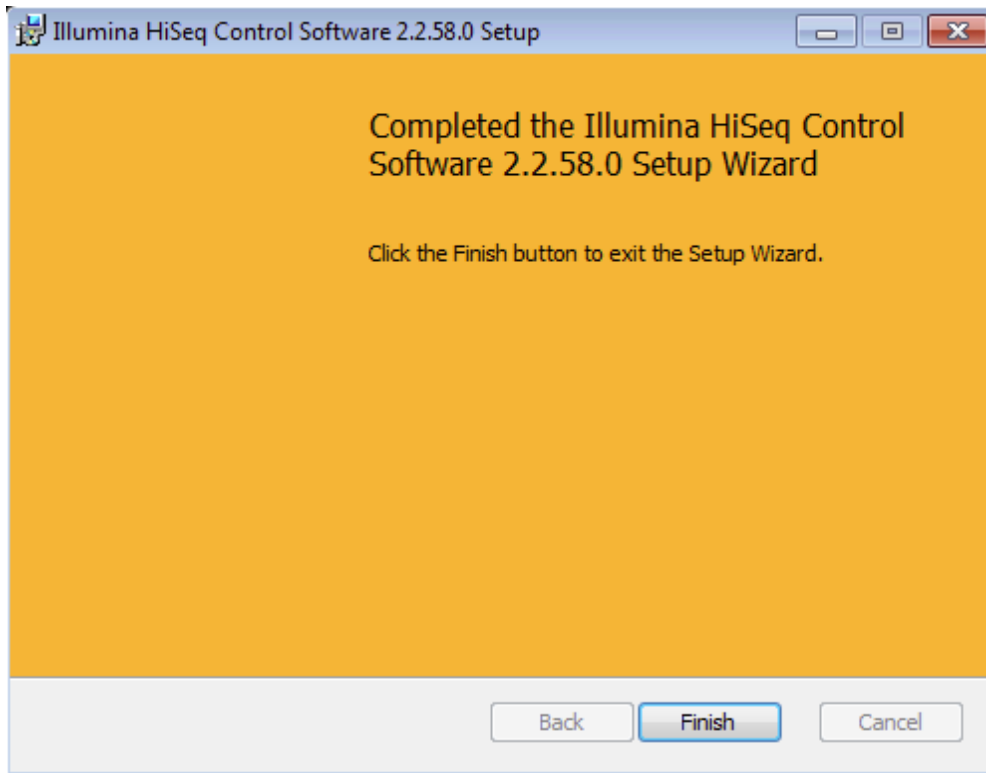
*HCS Setup Screen*



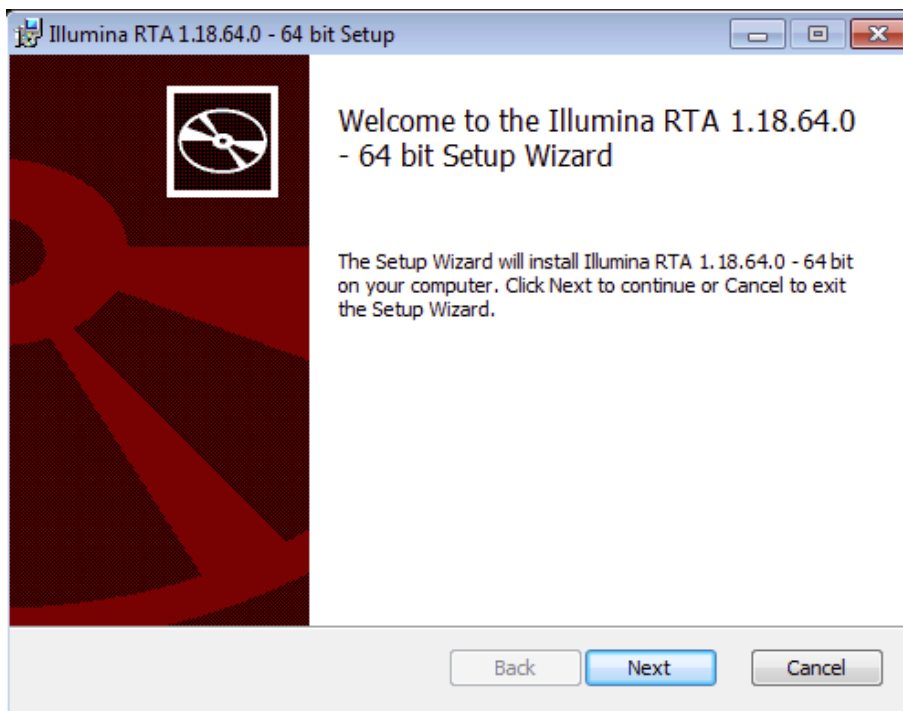


If you see this screen, press "OK" and continue.



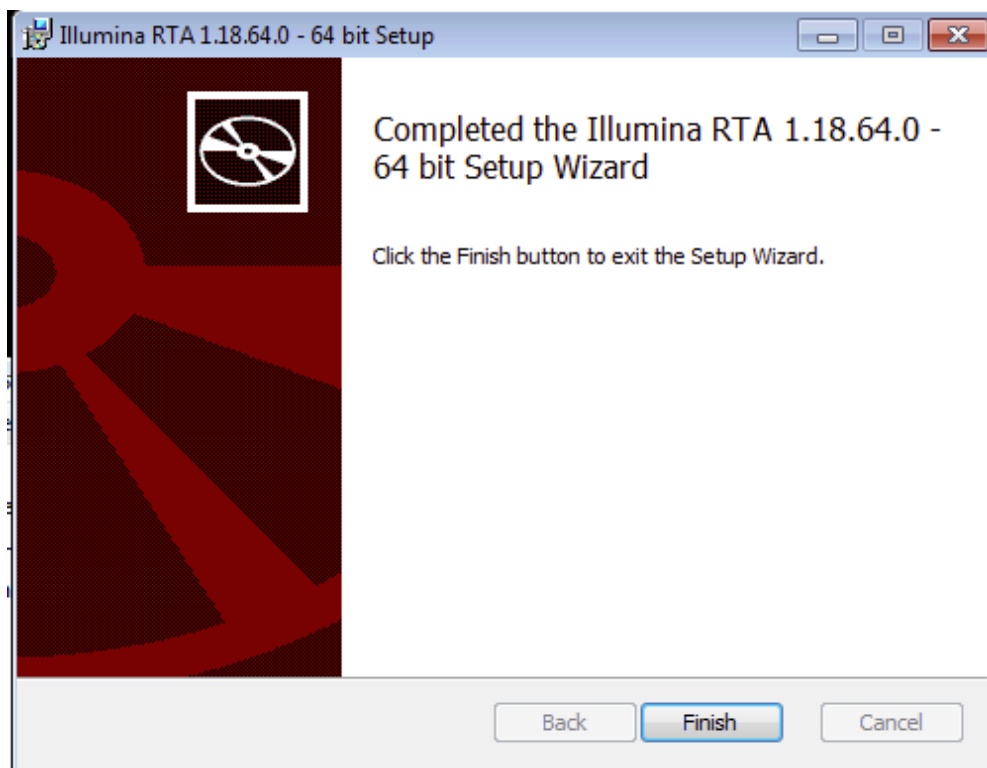
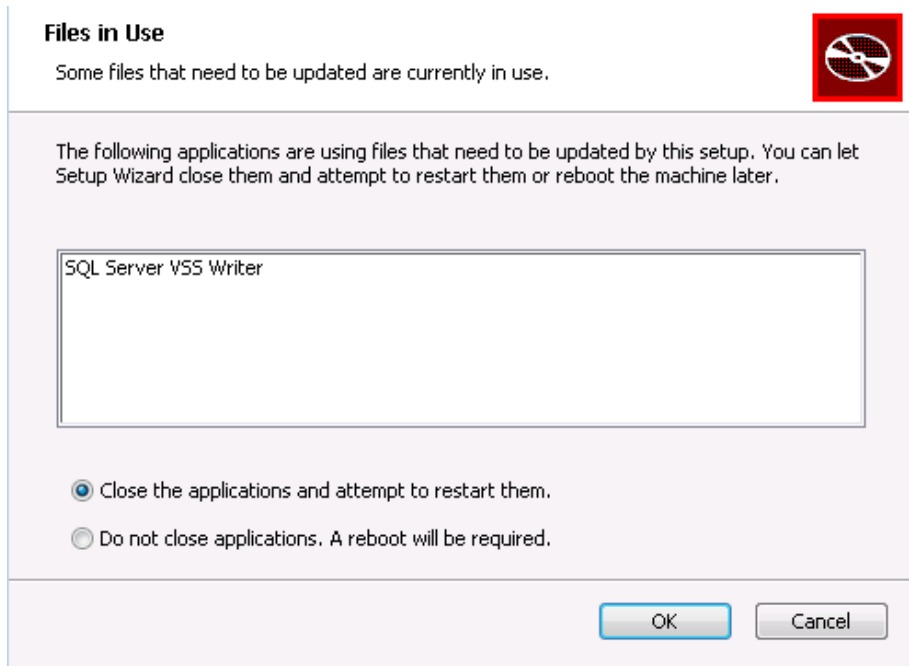


*RTA Setup Screen*

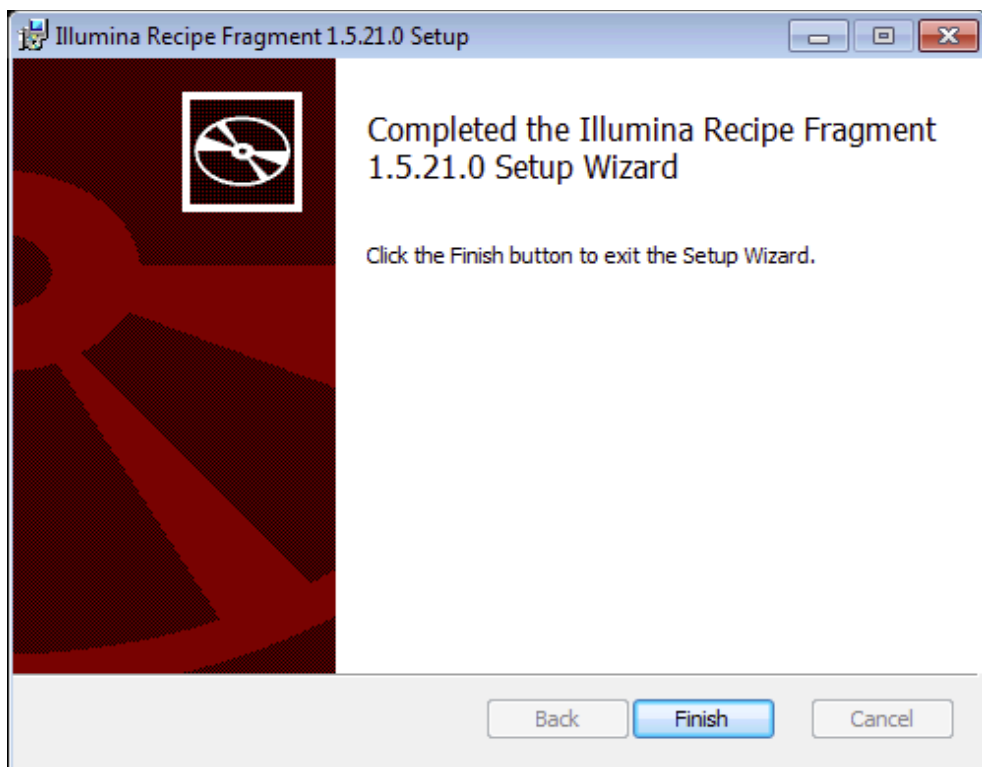
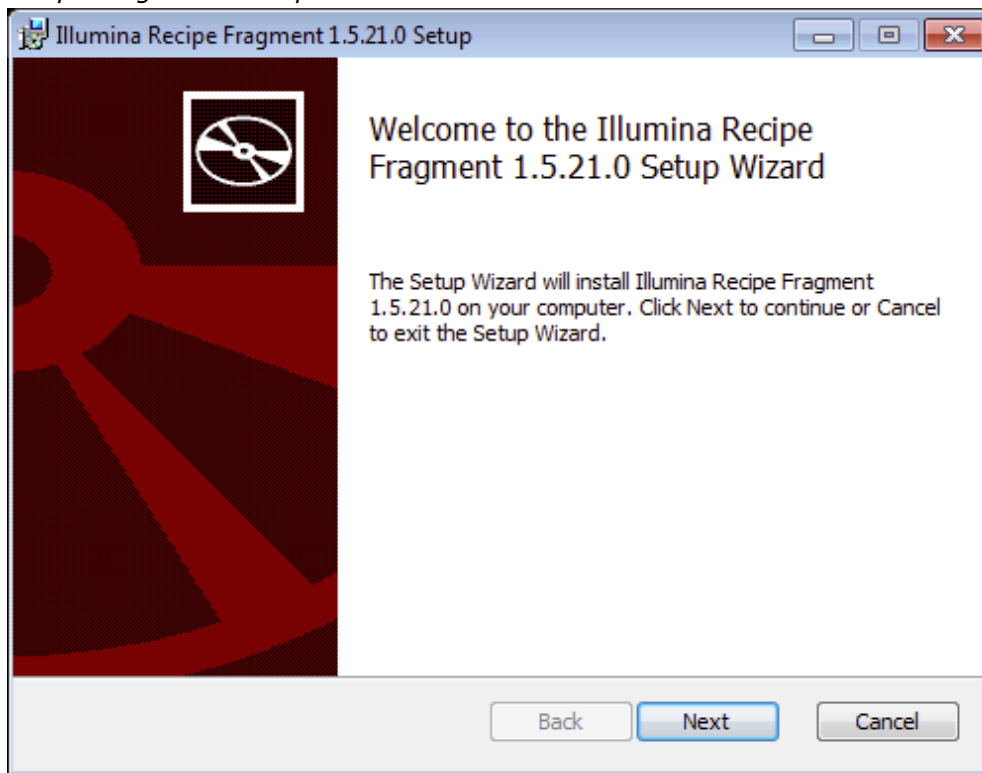


If you see this screen, press "OK" and continue.



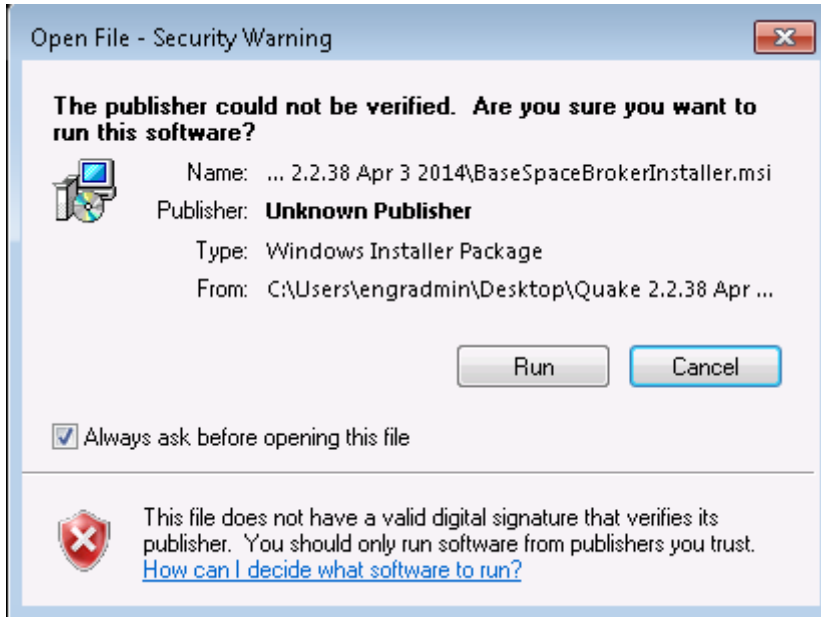


*Recipe Fragments Setup Screen*

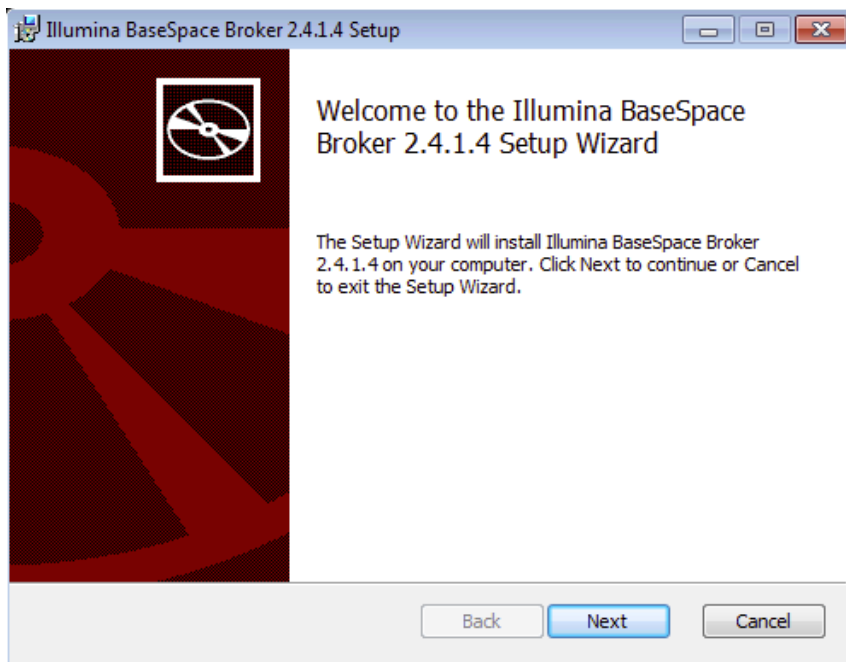


**Note:** if user does not desire to install BaseSpace Broker, select Cancel and select Yes on cancelling the installation. Then, select Finish to close broker install process.

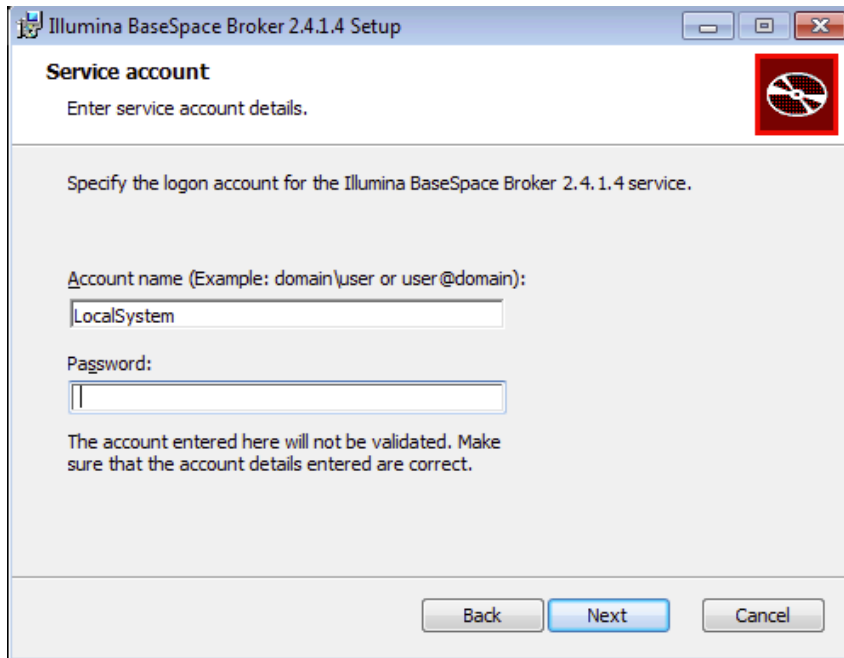
If you see this screen, press "Run" to continue installing BaseSpace Broker.



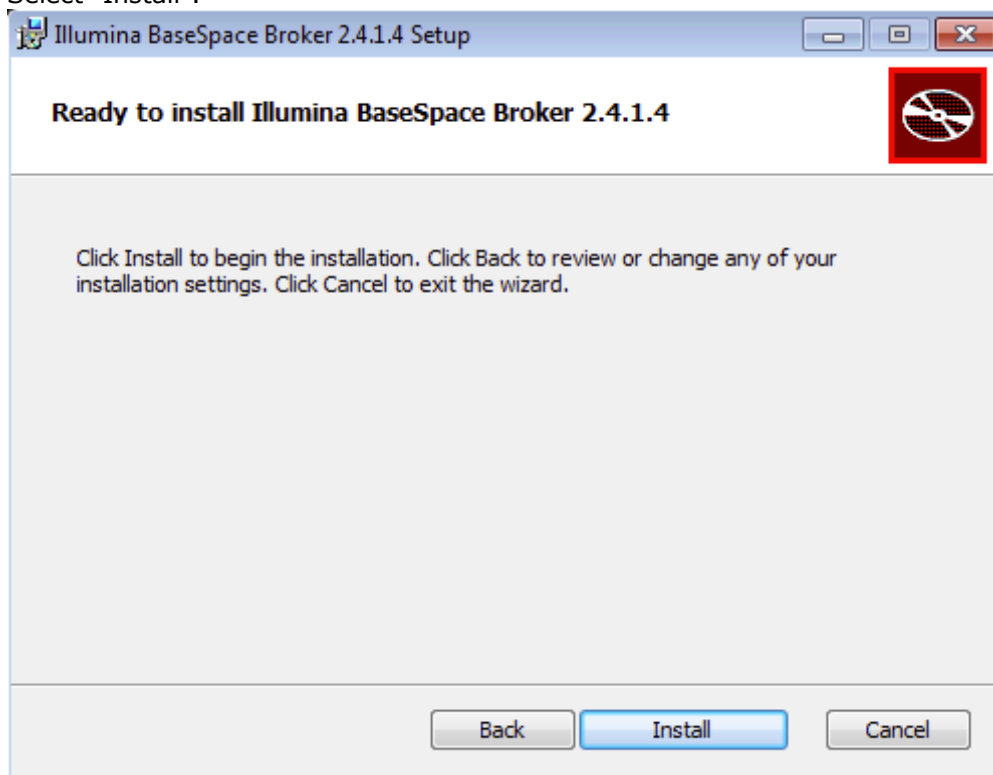
*BaseSpace Broker Setup Screen*

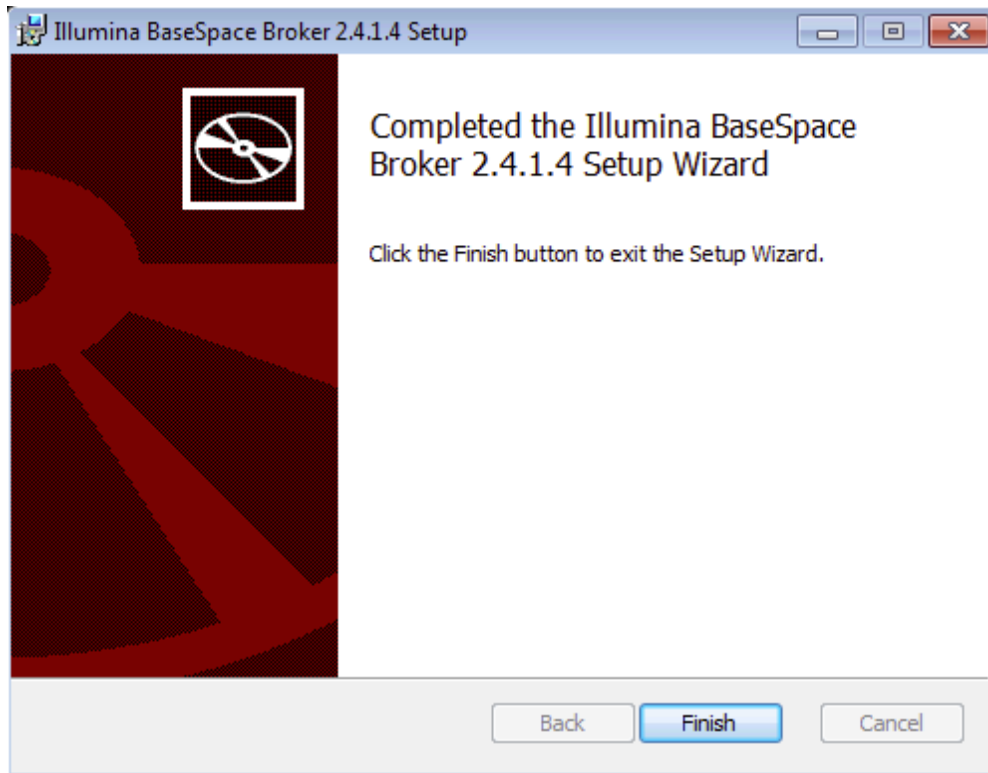


Enter "LocalSystem" and click on the Password text box. Leave the password empty and select "Next".



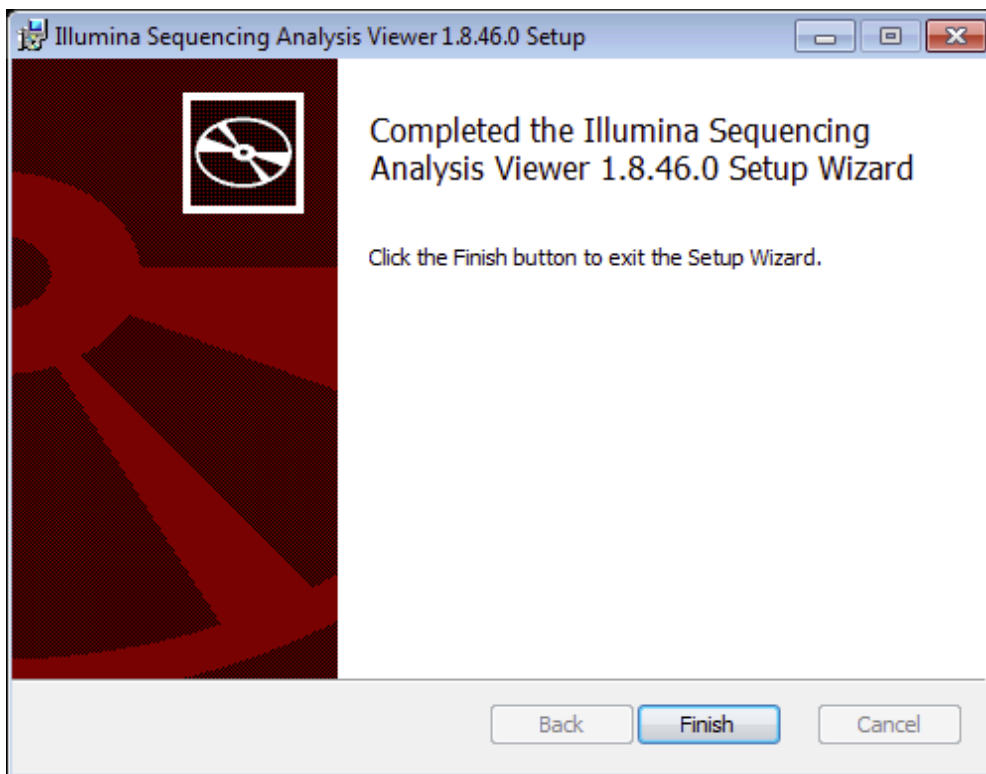
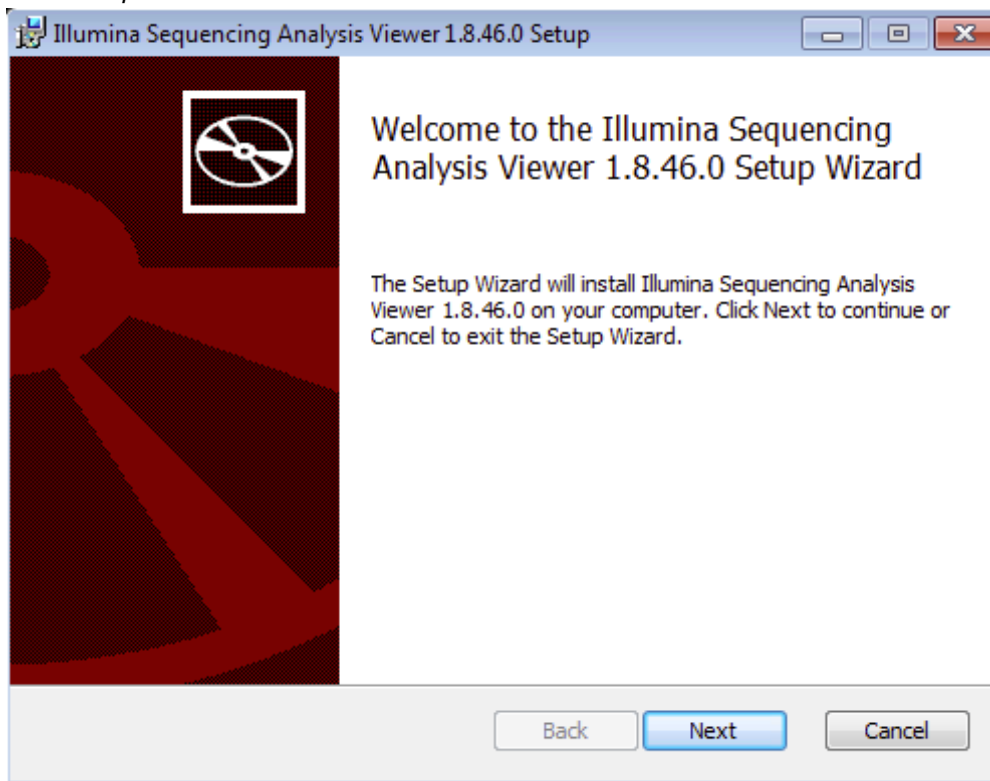
Select "Install".





**NOTE:** If updating from Early Access version, and service cannot be established while installing, navigate to D:\Illumina\basespace broker and create a folder "old runs". Move all the .dat and .xml to the "old runs" folder.

SAV Setup Screen



4. Once you have completed the installation, go to the control panel on the main Windows






menu: Control Panel\Programs\Programs and Features. Ensure that only one correct version of HCS, RTA, SAV, Recipe Fragments, and BaseSpace Broker have been installed. If you see more than one version, please contact Technical Support.

5. Launch the HCS software from desktop shortcut and verify that the instrument initializes. Select Menu >> About and confirm that the following software versions are updated and displayed:

- a. HCS 2.2.58
- b. RTA 1.18.64
- c. Recipe Fragment 1.5.21
- d. SAV 1.8.46
- e. Illumina BaseSpace Broker 2.4.1.4

Note: BaseSpace Broker version can only be checked from the Control Panel.

6. Ensure that the BaseSpace Broker service has automatically restarted and is now running. To do this, go to Control Panel, Administrative Tools, Services. From the list of Services, select BaseSpace Broker. The status should be listed as “Started”. If it is not, select it from the list and manually select start.

 Illumina RTA 1.18.64.0 - 64 bit	Illumina Inc.	11/10/2014	22.0 MB	1.18.64.0
 Illumina Sequencing Analysis Viewer 1.8.46.0	Illumina Inc.	11/10/2014	2.61 MB	1.8.46.0
 Illumina HiSeq Control Software 2.2.58.0	Illumina Inc.	11/10/2014	165 MB	2.2.58.0
 Illumina Recipe Fragment 1.5.21.0	Illumina Inc.	11/10/2014	381 KB	1.5.21.0
 Illumina BaseSpace Broker 2.4.1.4	Illumina Inc.	11/10/2014	14.2 MB	2.4.1.4



**Note:** The installer will automatically rename HiSeqControlSoftware.Options.cfg to HiSeqControlSoftware.Options.cfg.old, and rename RTA.exe.config to RTA.exe.config.old. These files will be in the same directory as the new configuration files. If any custom settings were made in these configuration files, these will need to be manually merged into the new configuration files.

Network pathway definitions are contained in the Options.cfg file. This means that paths will need to be re-entered in the appropriate screen in HCS on the first time it is run.

**Note:** Individual installers are included for all the components as well: HCS, RTA, Recipe Fragments, SAV, and basespace broker.

- These individual installers should NOT be needed if using the Install Script.
- In case there is a problem during the installation, individual installers can be used to install individual components.
- If this occurs, first manually uninstall the program through Control Panel > Programs and Features before repeating the installation.

### Installation Troubleshooting:

Please contact Illumina Product Support if any issues arise during installation.